

Interagency Acquisitions for Recreation and Habitat Conservation

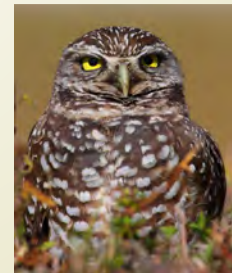
Collaboration Between Santa Clara County Parks and Santa Clara Valley Habitat Agency

1

Robin Kohn, Senior Real Estate Agent – SCC Parks and SCV Habitat Agency

November 6, 2024

IRWA Lunch and Learn



Presentation Overview

- ▶ Role of County Parks in Acquisitions
- ▶ Habitat Plan Basics
- ▶ Reserve System and conservation easements
- ▶ Public Access and recreation
- ▶ Joint Acquisitions
- ▶ Challenges



County Parks Policy and Planning Guiding Documents



- Park Acquisition Plan
- Park Charter and Park Plans
- Santa Clara Valley Habitat Plan
- Santa Clara County General Plan
- Parks Strategic Plan
- Countywide Trails Master Plan
- Legislative Guidance (State Code, County Ordinances)
- Board policies

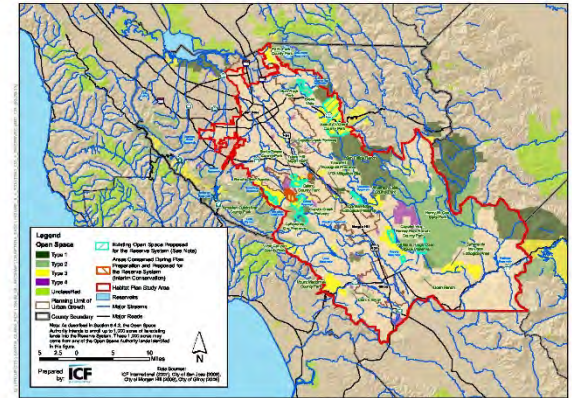
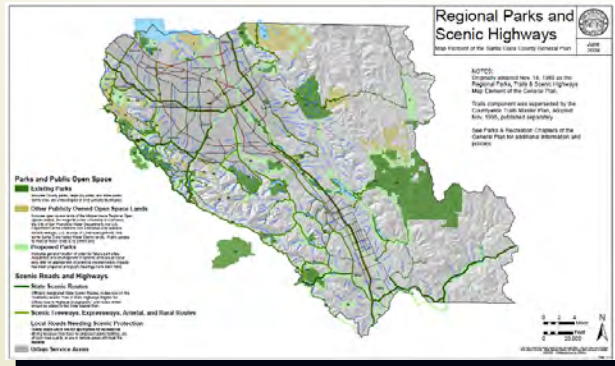
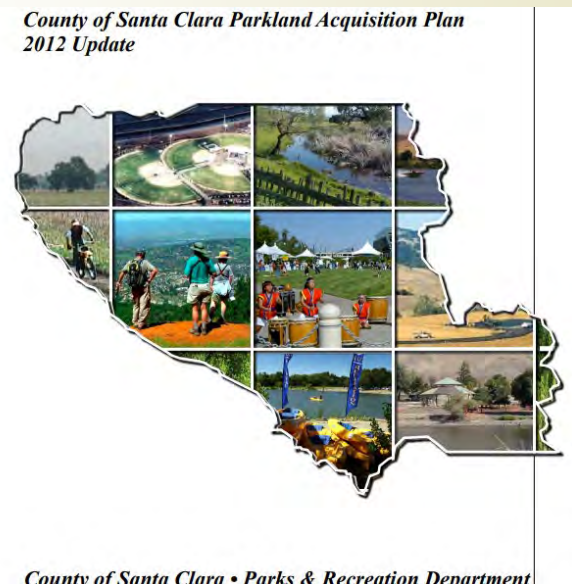
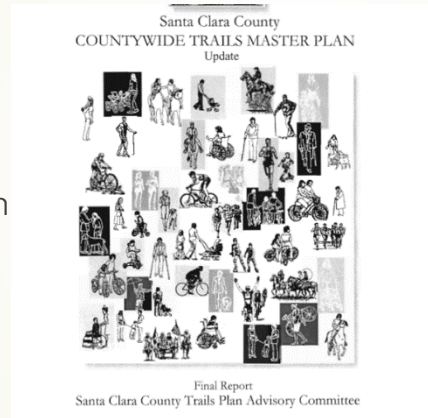


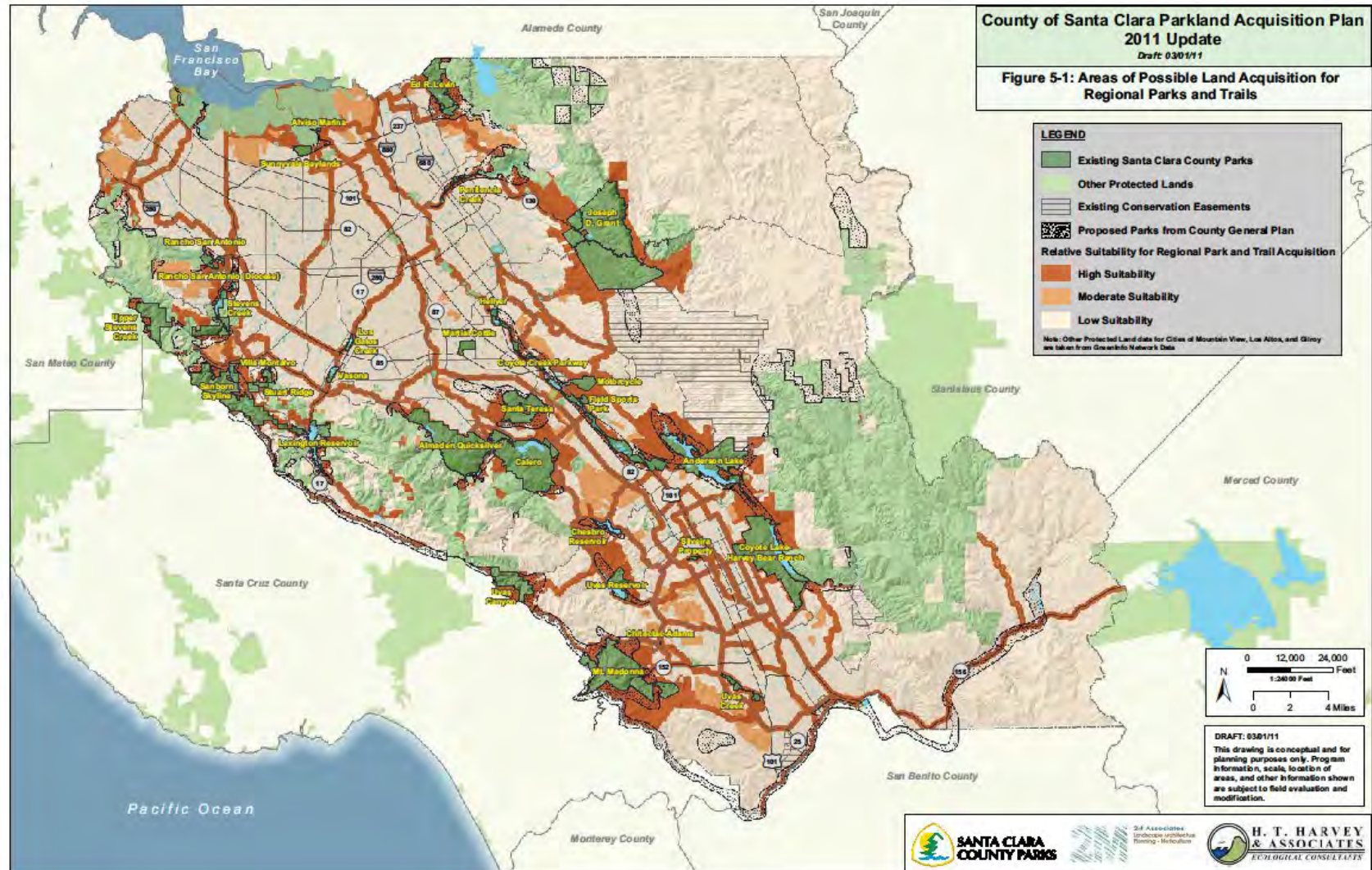
Figure S-4 Existing Open Space and Interim Conservation Proposed for the Reserve System



Parks Acquisition Plan Map

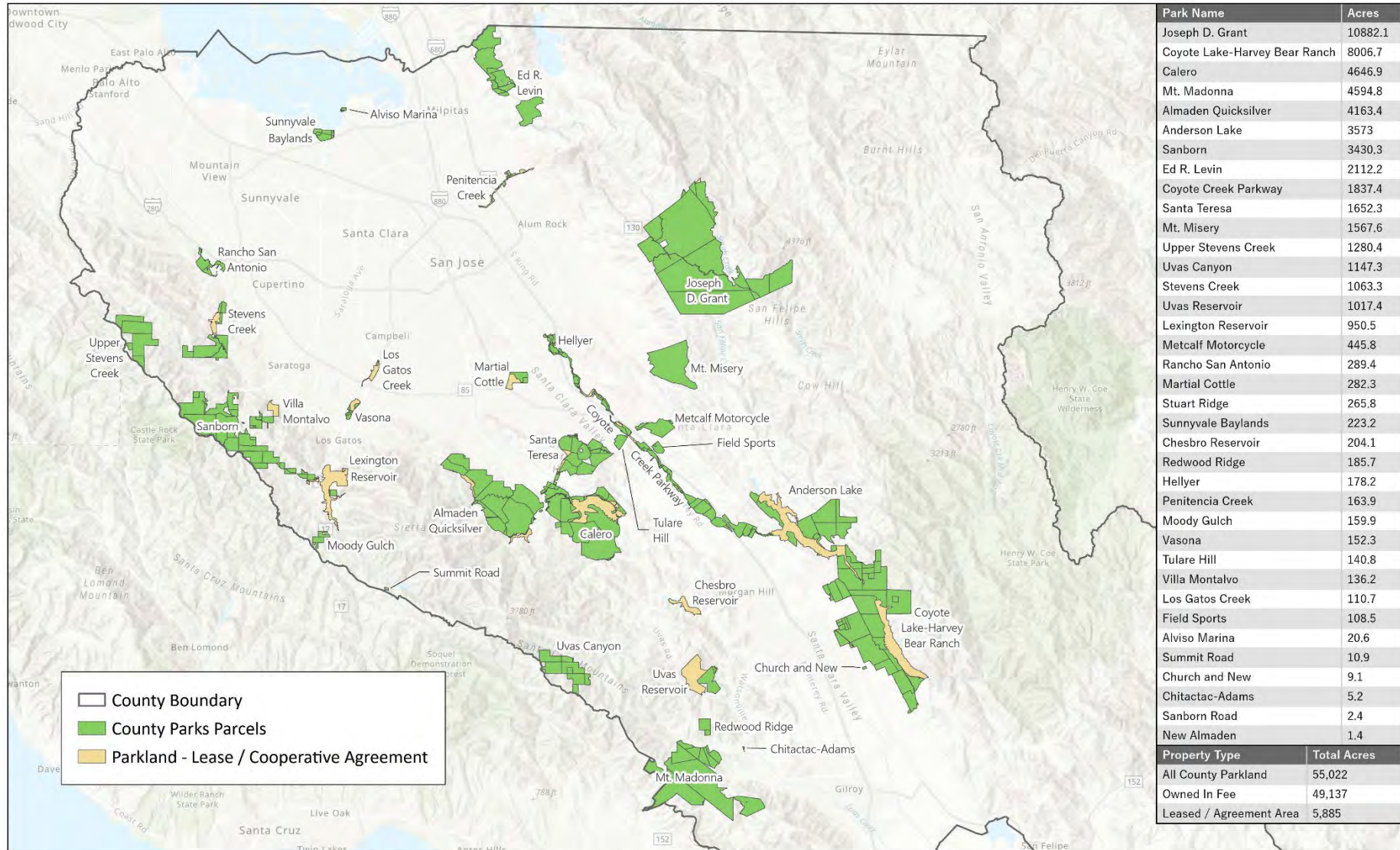
4

(Provides general guidance for suitable landscapes, not necessarily specific properties)



Real Estate Owned by County Parks

5



Park Name	Acres
Joseph D. Grant	10882.1
Coyote Lake-Harvey Bear Ranch	8006.7
Calero	4646.9
Mt. Madonna	4594.8
Almaden Quicksilver	4163.4
Anderson Lake	3573
Sanborn	3430.3
Ed R. Levin	2112.2
Coyote Creek Parkway	1837.4
Santa Teresa	1652.3
Mt. Misery	1567.6
Upper Stevens Creek	1280.4
Uvas Canyon	1147.3
Stevens Creek	1063.3
Uvas Reservoir	1017.4
Lexington Reservoir	950.5
Metcalf Motorcycle	445.8
Rancho San Antonio	289.4
Martial Cottle	282.3
Stuart Ridge	265.8
Sunnyvale Baylands	223.2
Chesbro Reservoir	204.1
Redwood Ridge	185.7
Hellyer	178.2
Penitencia Creek	163.9
Moody Gulch	159.9
Vasona	152.3
Tulare Hill	140.8
Villa Montalvo	136.2
Los Gatos Creek	110.7
Field Sports	108.5
Alviso Marina	20.6
Summit Road	10.9
Church and New	9.1
Chitactac-Adams	5.2
Sanborn Road	2.4
New Almaden	1.4
Property Type	Total Acres
All County Parkland	55,022
Owned In Fee	49,137
Leased / Agreement Area	5,885



This map generated by the County of Santa Clara Department of Parks and Recreation. The GIS files were compiled from various sources. While deemed reliable, the Department assumes no liability.

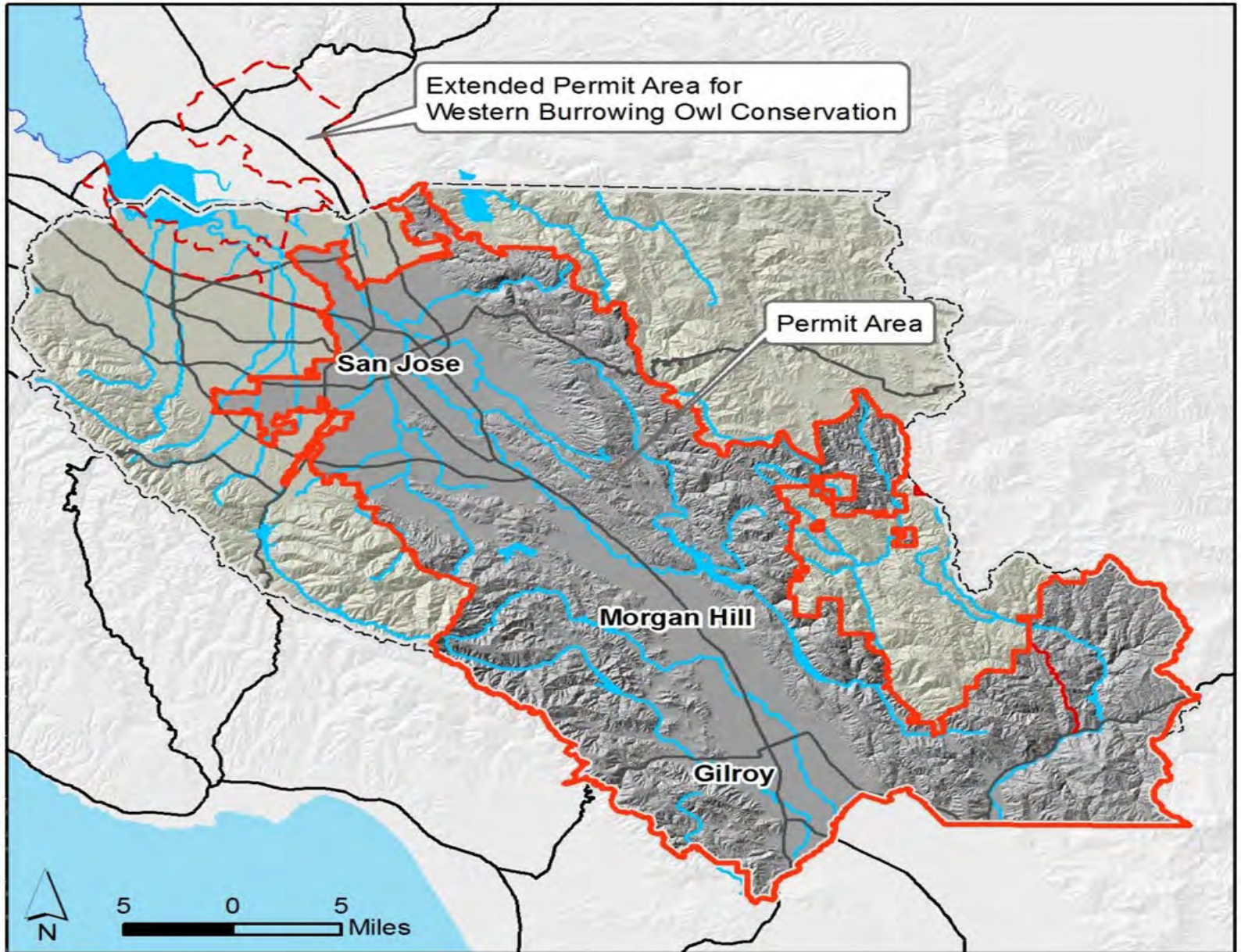
Santa Clara County Parks - Owned Parcels
Created by: 10/24/2024





Parks Role in Land Acquisition:

- Add to existing Parks
- Connect between Parks and other open space
- Provide Regional trail connections
- As a Partner in the Habitat Plan, add to the Habitat Reserve System, when in alignment with County policies and guidelines



Santa Clara Valley Habitat Plan Permit Area

Who Developed the Habitat Plan?

The Plan was prepared by six local agencies, which are represented on the Habitat Agency Board:

- City of Gilroy
- City of Morgan Hill
- City of San José
- County of Santa Clara
- Santa Clara Valley Water District
- Santa Clara Valley Transportation Authority



- ▶ The Habitat Agency's primary responsibility is implementing the Santa Clara Valley Habitat Plan for 50 years (Habitat Conservation Plan and Natural Communities Conservation Plan).
- ▶ The Habitat Plan provides streamlined state and federal endangered species and Clean Water Act Section 404 permitting for public and private projects.
- ▶ Programmatic "take" permit for threatened and endangered species and landscape scale conservation.
- ▶ The most significant role of the Habitat Agency is to acquire and manage a 47,000-acre Reserve System for the purpose of covered species recovery.



Species Covered by the Plan

10

Wildlife

Plants

Invertebrates

Tiburon Indian
paintbrush

Bay checkerspot
butterfly

Coyote ceanothus

Amphibians and Reptiles

Mount Hamilton thistle

California tiger
salamander

Santa Clara Valley
dudleya

California red-legged
frog

Fragrant fritillary

Foothill yellow-legged
frog

Loma Prieta hoita

Western pond turtle

Smooth lessingia

Birds

Metcalf Canyon
jewelflower

Western burrowing owl

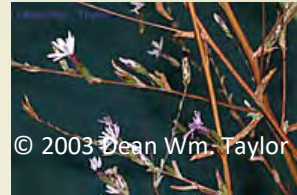
Most beautiful
jewelflower

Least Bell's vireo

Tricolored blackbird

Mammals

San Joaquin kit fox

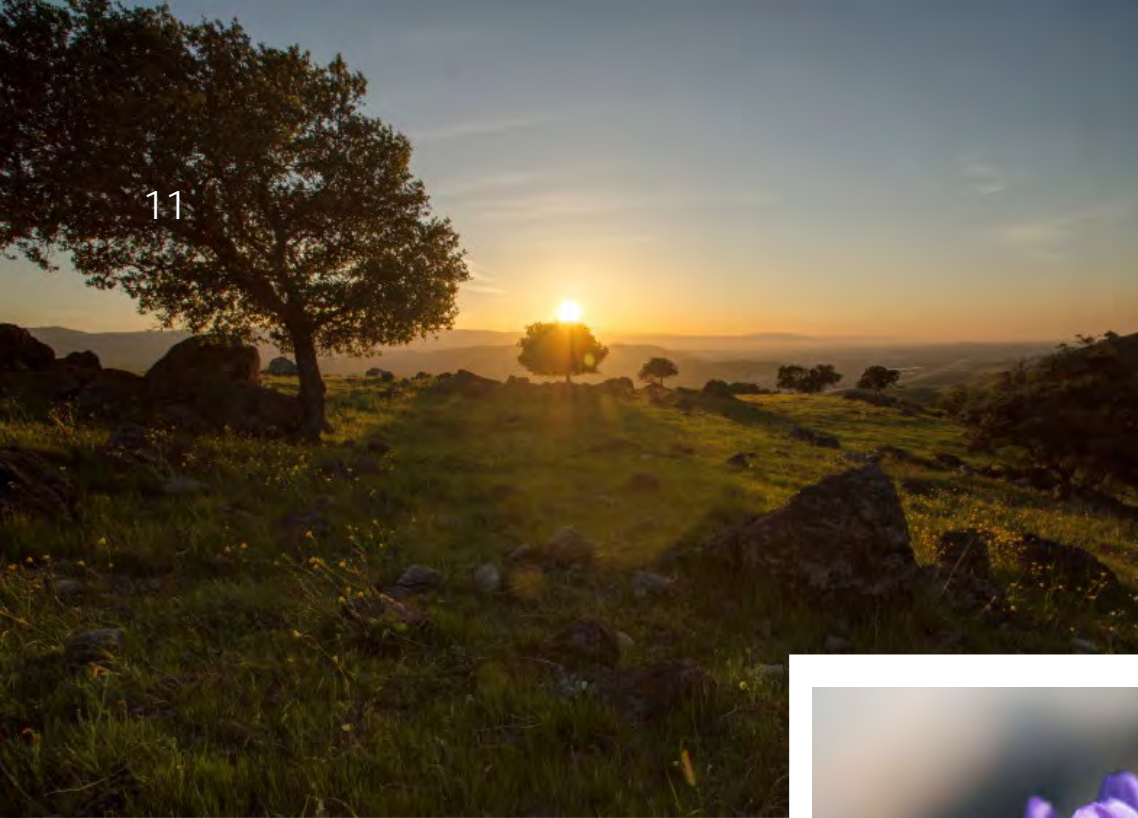


© 2003 Dean Wm. Taylor

© 2005 Janel Hillman

Photo
by Barbara
A. Arnold

11



Development impacts are assessed

Land cover fees paid to Habitat Agency

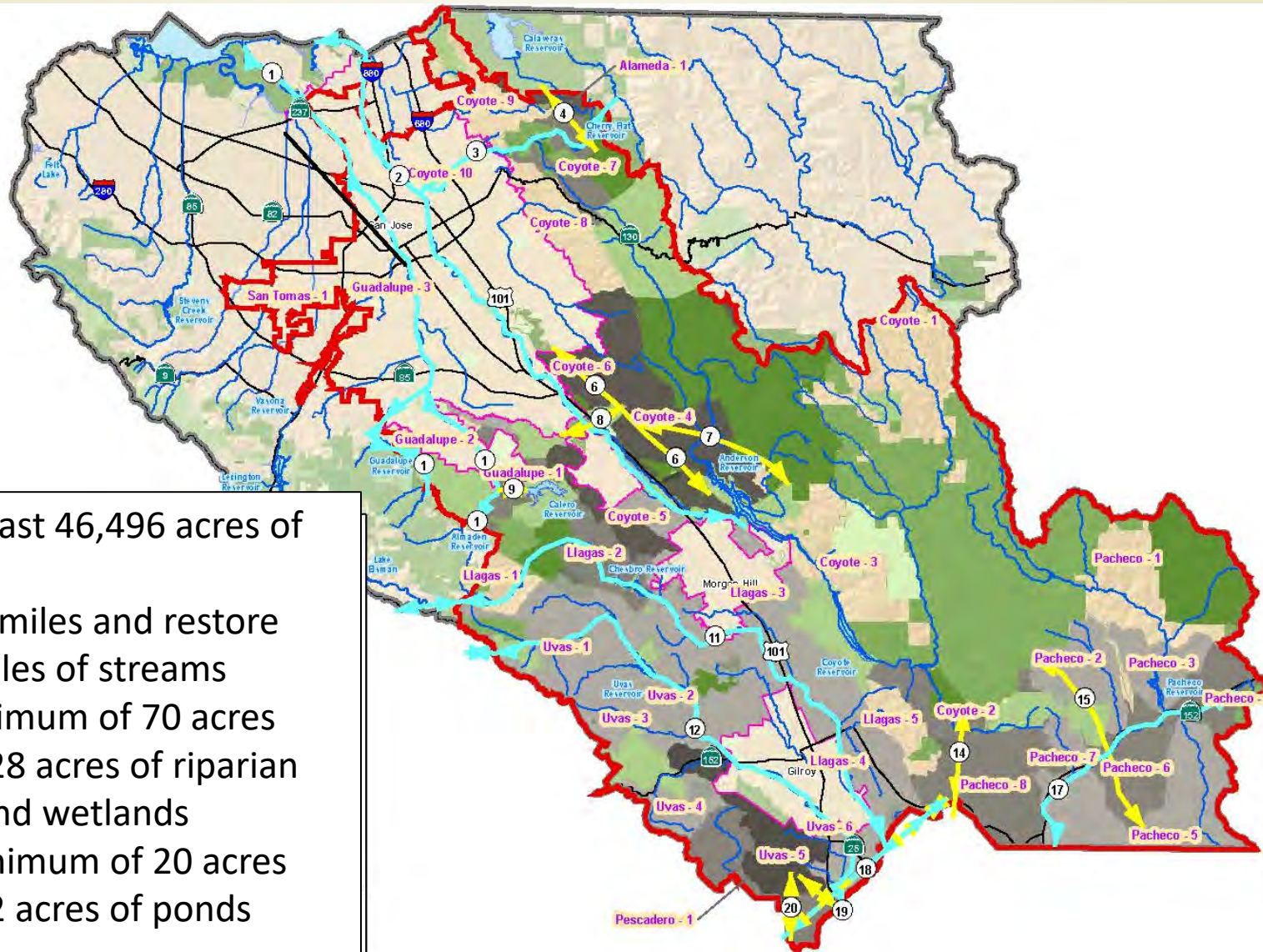
Fees are used to purchase or protect land with CE, and for habitat restoration

Land provides habitat for covered species and facilitates their recovery



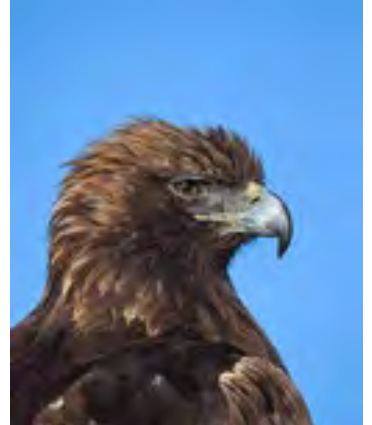
Habitat Plan Conservation Strategy

12

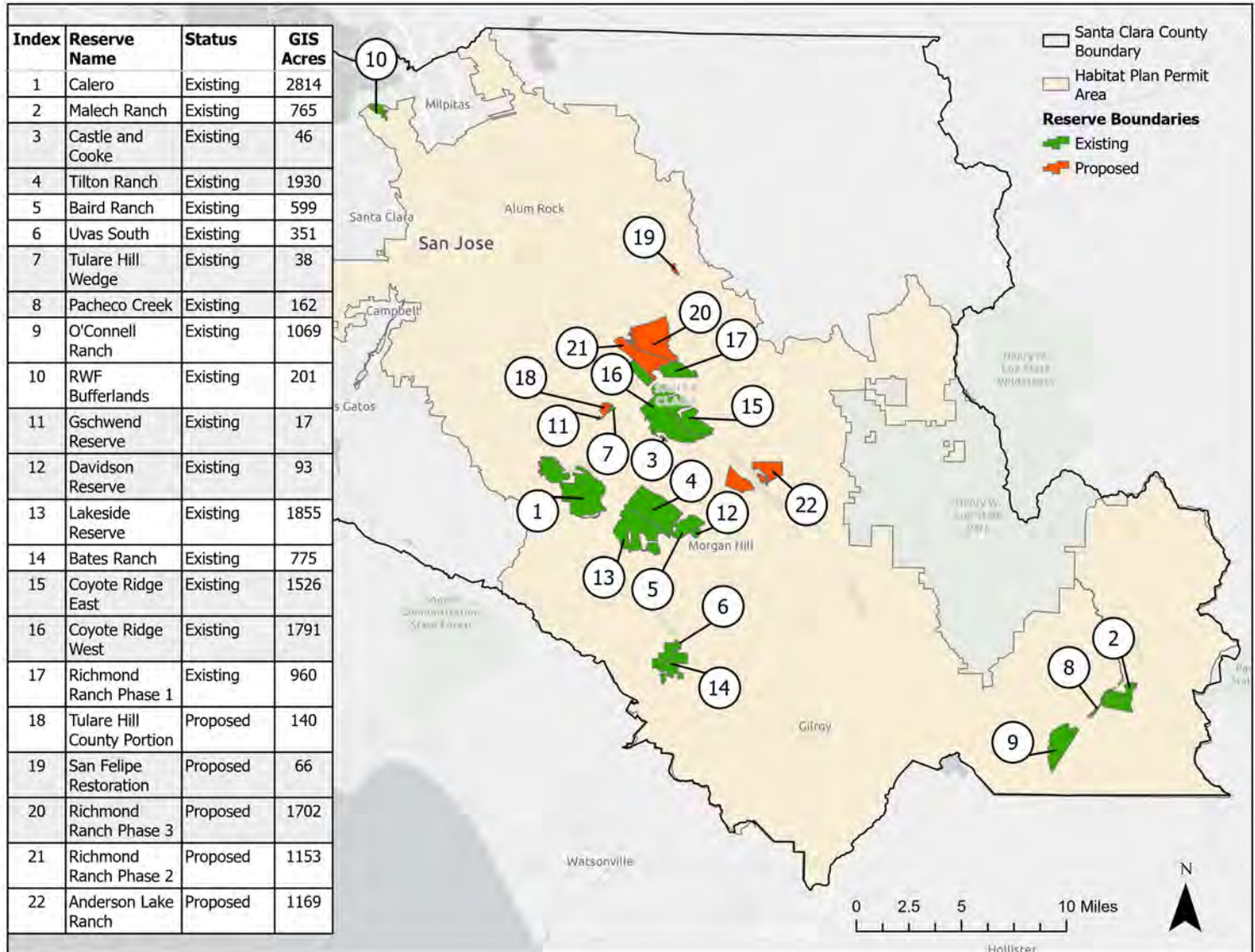


- Protect at least 46,496 acres of land
- Protect 100 miles and restore nearly 10 miles of streams
- Restore minimum of 70 acres and up to 428 acres of riparian woodland and wetlands
- Create a minimum of 20 acres and up to 72 acres of ponds





Habitat Reserve System as of October 2024



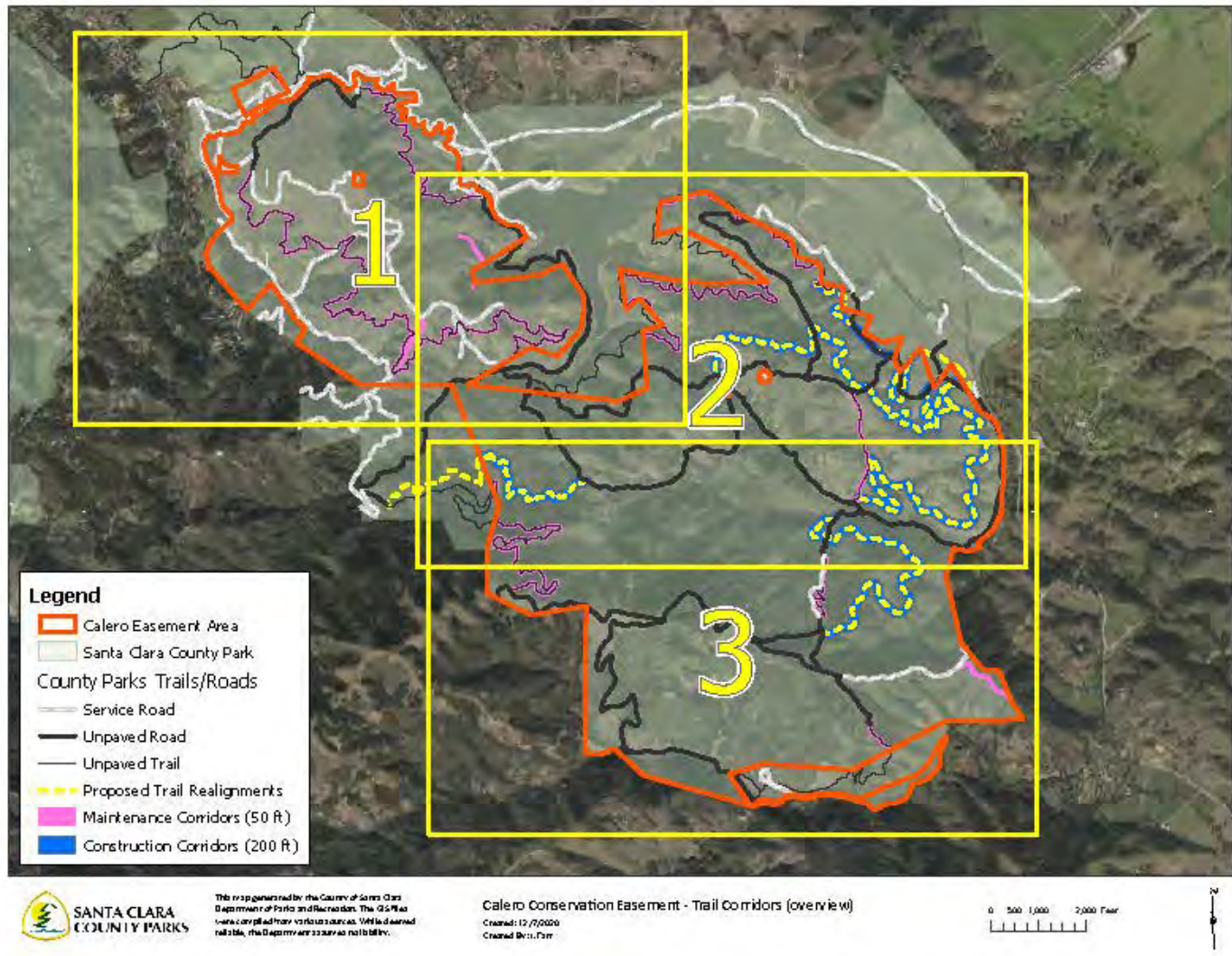
Relevant Provisions of Habitat Plan for County Parks

- ▶ Includes Almaden Quicksilver, Anderson Lake, Calero, Coyote Lake Harvey Bear Ranch, Grant, Santa Teresa in Habitat Reserve System – over 11,000 acres to be added to Reserve System
- ▶ Parks new land acquisitions with Habitat Agency can provide credit for County Projects
- ▶ Management plans are required within 5 years of Habitat Plan CE being placed over property
- ▶ Recreational uses are allowed uses, including public trails
- ▶ For a site to qualify and receive credit as part of the Reserve System, the Implementing Entity will obtain a conservation easement or similar mechanism that is approved by the Wildlife Agencies over these lands
- ▶ Lands to be included must be compatible with both Habitat Agency conservation values and Parks/County land acquisition guiding documents/policies



Example – Calero County Park

(map depicts three sections of the Park including trails)



18

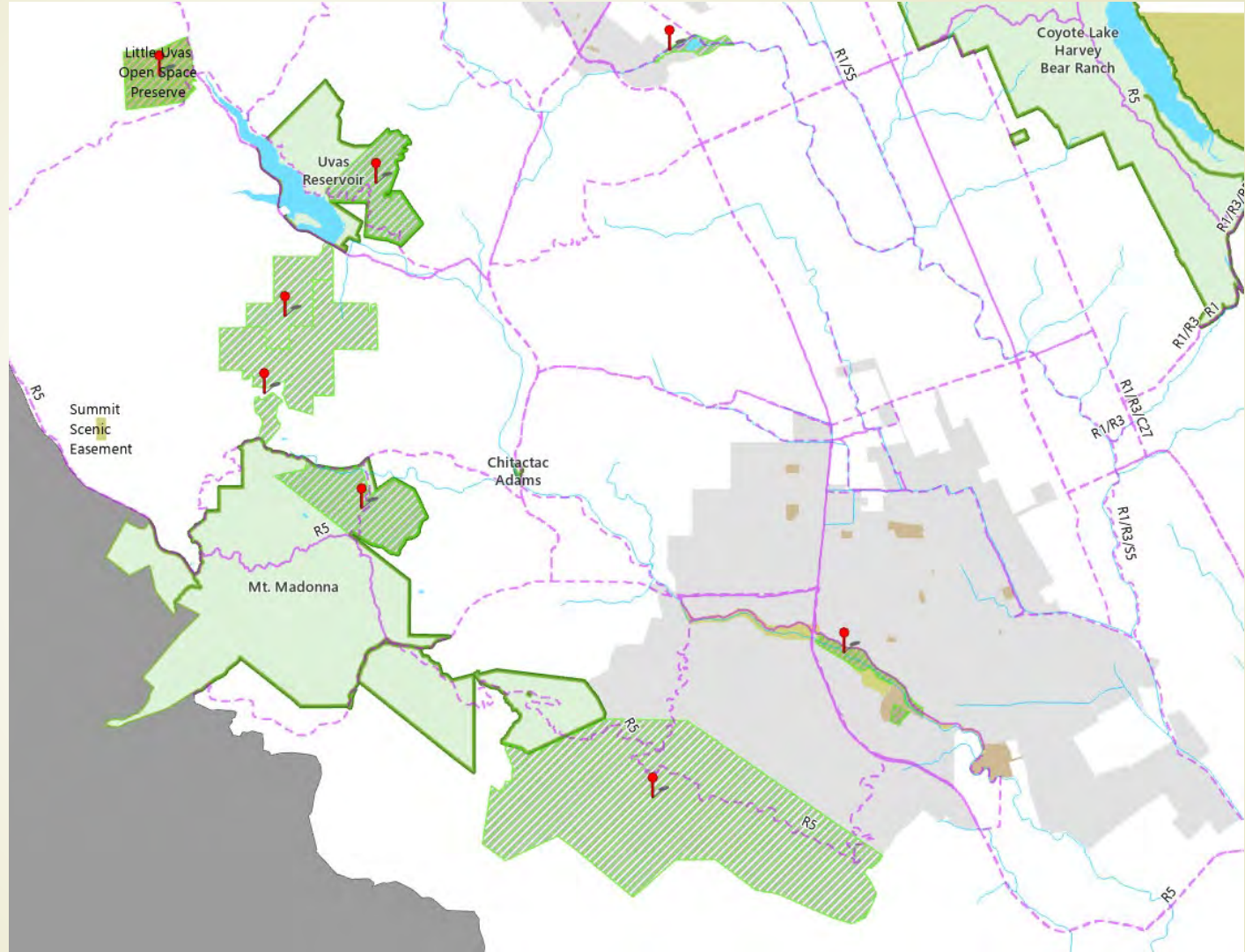
- 2,800 acres of Calero County Park covered by Conservation Easement
- Allowed uses include multi-use recreational trails, grazing



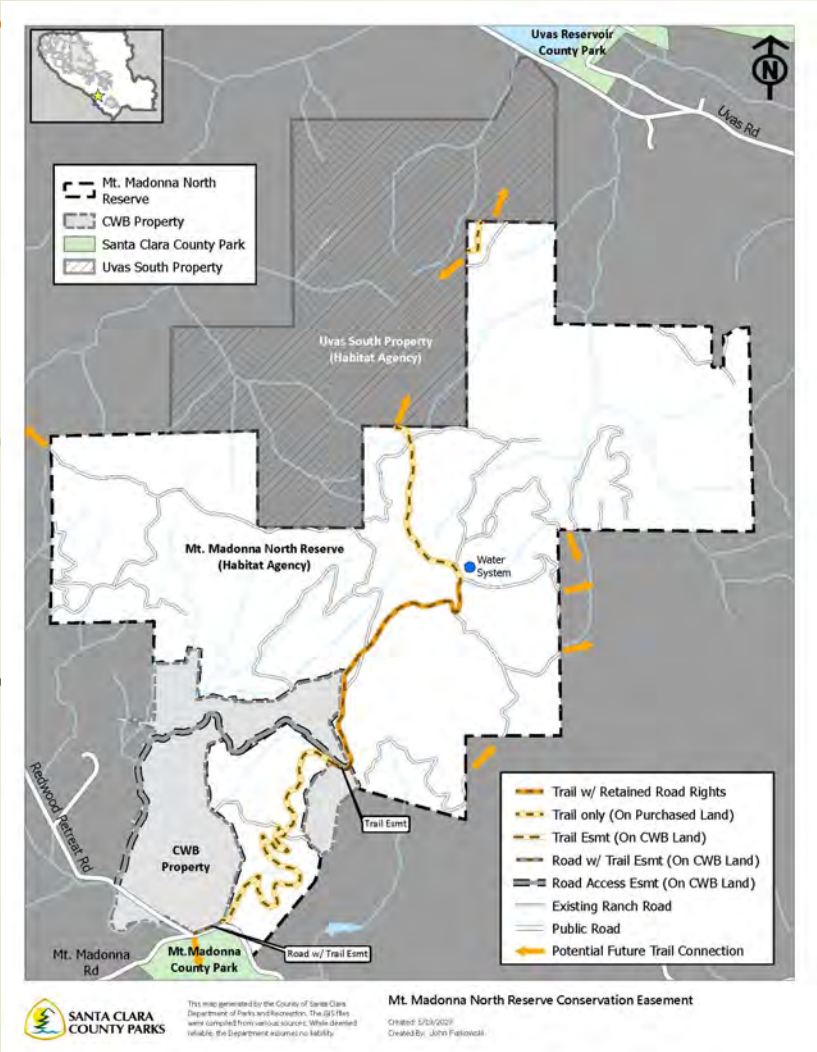
Example:

Mount Madonna North/Bates Acquisition Partnership

Uvas
Reservoir to
Madonna



Mount Madonna North/Bates



2 Mount Madonna North/Bates Ranch Property Details



735 acres of an 852-acre property. Habitat Agency purchased in fee; Bates retained the remaining acres; Parks obtained trail and access easements.



Would provide wildlife corridor and multi use trail from Uvas South Property to Mount Madonna County Park.



Habitat includes: Coast live oak woodlands, mixed hardwood forests and grassland for multiple protected species.



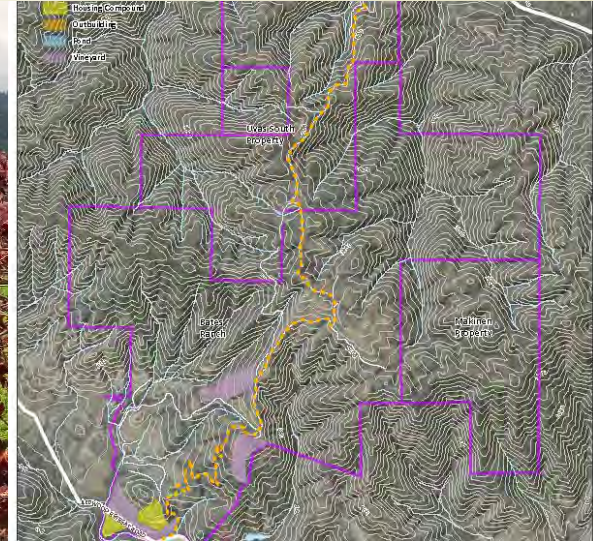
Funding Collaboration with POST, Moore Foundation, SCVHA, WCB, USFWS, WCN, and County Parks.

Other Future Uses

Retained Homes and Vineyards by Charles W. Bates

735 acres to be transferred to County Parks with Conservation Easement held by Habitat Agency

County Parks multi-use trail

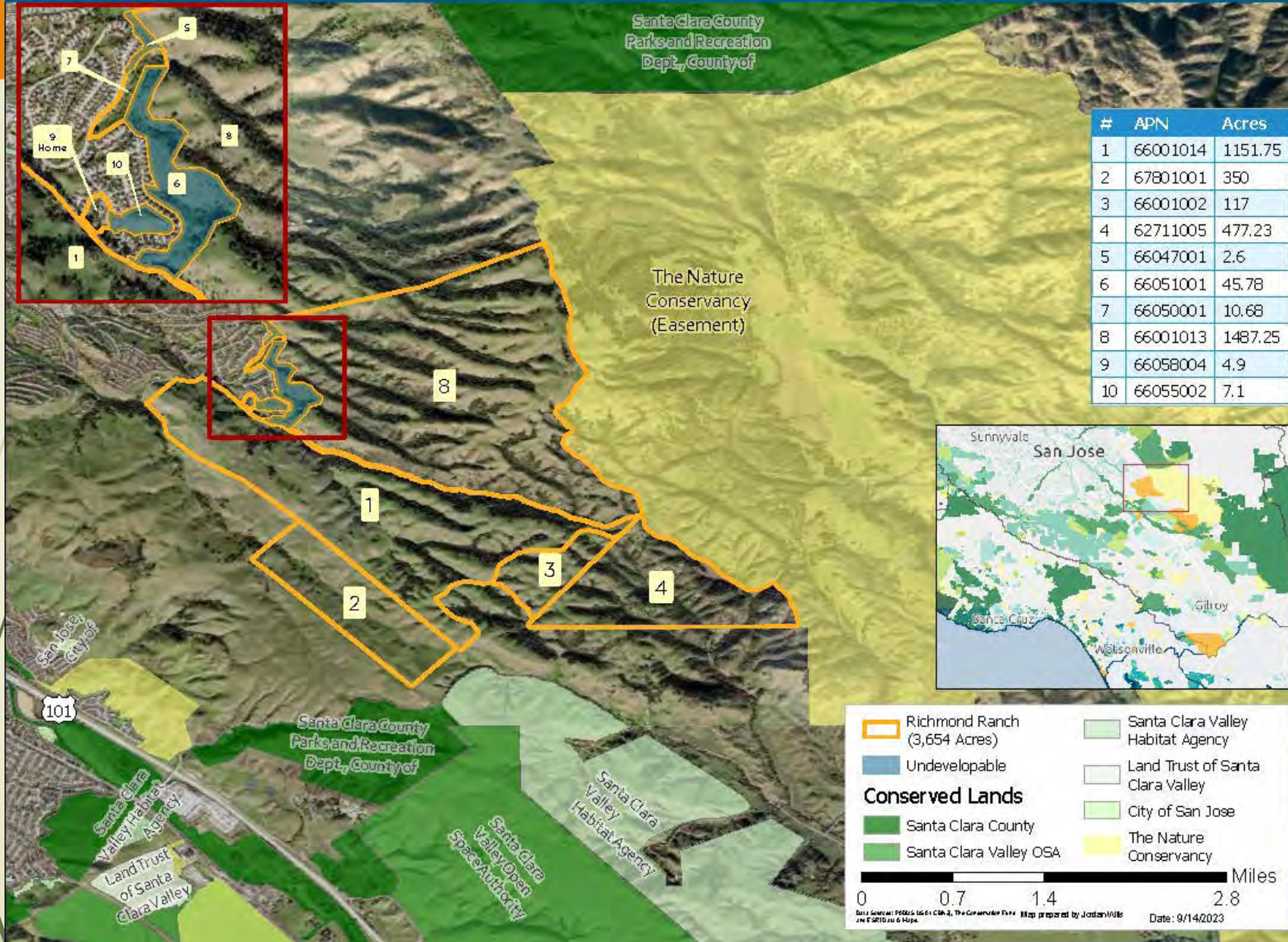


Example - Richmond Ranch Property Acquisition Partnership



Richmond Ranch

3,654 Acres in Santa Clara County California



Richmond Ranch (3,654 Acres)

- Undevelopable

Conserved Lands

- Santa Clara County
- Santa Clara Valley OSA
- Santa Clara Valley Habitat Agency
- Land Trust of Santa Clara Valley
- City of San Jose
- The Nature Conservancy

0 0.7 1.4 2.8 Miles

Data Sources: PG&S 16-01 CA-2, The Conservation Fund. Map prepared by Jordan Wilk. JWC © 2010 and © 2023. Date: 9/14/2023

Richmond Ranch Property Details



3,654 -acre property in total purchased by The Conservation Fund



944.23 acres to the Habitat Agency in first phase and 1,487 acres to County Parks. Additional acreage held by TCF pending grant funding in March 2025



Supports fourteen protected species and critical habitat, and important wildlife linkage connecting other protected lands.



Funding Collaboration with The Conservation Fund, Moore Foundation, WCN, SCVWD, WCB, Coastal Conservancy, SCVHA, and County Parks.

Richmond Ranch - Future Goals

Transfer all land to County Parks and add to Habitat Reserve System through conservation easement

Protect species, serpentine and critical habitat

Wildlife Corridor

County Parks multi-use trail





Challenges

- ▶ *Increasing population & economic pressure on Bay Area habitats*
- ▶ *Balancing recreation and wildlife habitat protection*
- ▶ *Rising Land Costs*
- ▶ *Invasive Species Management*
- ▶ *Climate change*
- ▶ *Addressing wildlife movement*



Questions?